

NETGEAR[®] Insight Instant Captive Portal

A marketing tool for your business. Bringing you an enterprise-grade, secure, customizable guest WiFi portal with easy configuration, management, and insightful analytics

POWERED BY
RaGaPa

Why a captive portal for your business?

According to surveys, consumers expect WiFi access at any business where they spend over two minutes waiting for service. In exchange for providing a WiFi service, your business receives commercial value for owning GDPR-compliant customer information and having the ability to communicate and market to the customers directly.



A perfect tool for your business

1. An analytics tool to help you understand your offline customers and build detailed customer profiles
2. A marketing tool allows you to personalize communication with key info obtained from visitors
3. Enhances business brand image and credibility through professional portal customizable settings
4. Improve customer experience with fast and secure WiFi
5. Get a log of all WiFi access for a whole year for traceability and security
6. Professional look and feel enhancing your company's perception



Comprehensive features

Get a professional captive portal with features and capabilities similar to a nationwide franchise. Instant Captive Portal gives you:

- Easy portal setup
- Rich customization options
- User data collection and analytics (demographic information for FB login)
- PayPal integration
- Multilingual support
- WiFi access voucher system
- One year user log storage



Easy portal setup and rich customization options

Gain full flexibility and control of your Captive Portal. You can easily customize your business splash page, landing page, marketing communications, and much more.



Multilingual support

Insight Instant Captive Portal is available in five different languages, English, Chinese, French, German and Japanese. Easily select a language through the Insight app or cloud platform.



User data collection and analytics

Collect demographic data through Facebook login, including user's name, email, age, gender, and location.



One year user log storage

Access and store logs for compliance for up to one year. Improve traceability when your business is prompted for an investigation.



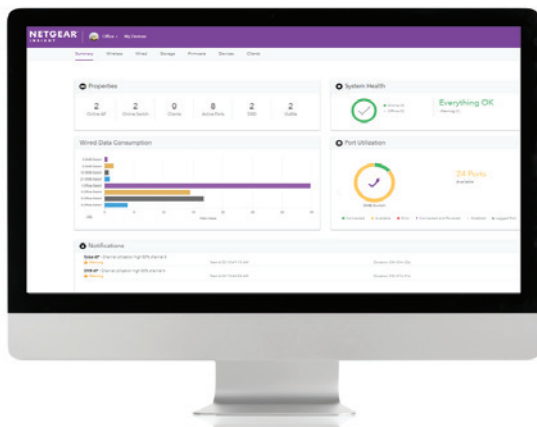
PayPal integration

Customize guest WiFi payment by charging your users by their usage time. Integrate payment through PayPal to simplify your users' experience.



Manage Network Traffic

Schedule session times, set expiration dates and device limitations to manage bandwidth limitations and prevent network slowdowns.



Subscription-based service

Instant Captive Portal is a paid subscription service. The subscription is based on the number of years of service, and the number of Insight Managed access points where the service is enabled.

For Insight Premium users, subscription is purchased from your Insight portal, under Account Management.

For Insight Pro users, contact sales@netgear.com or your local NETGEAR sales representative.